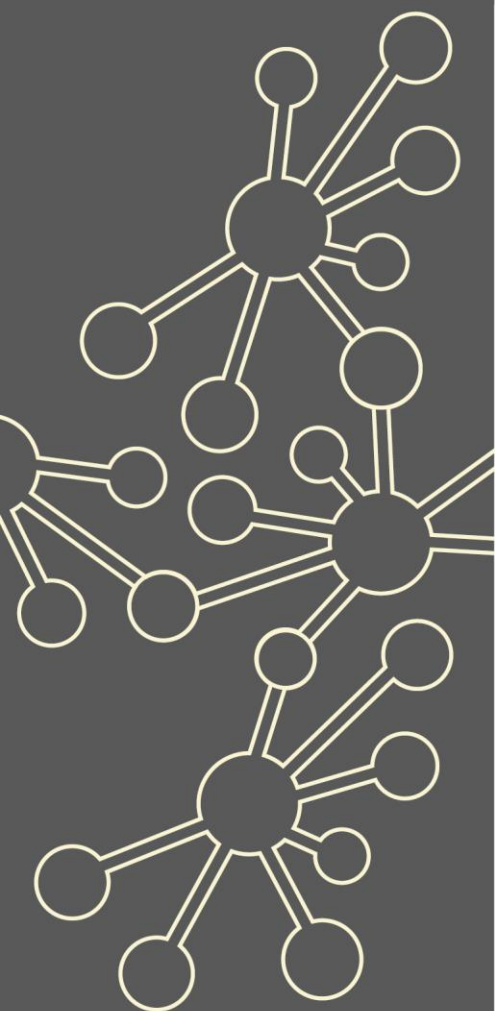


Developing Core Maths Pedagogy

Maths Hubs Network
Collaborative Projects
2021/22

NCP21-22



Outline

Primary focus for 2021/22: Core Maths pedagogy to support Covid recovery

These Work Groups give teachers opportunities, through collaboration and experimentation, to develop improved teaching approaches that support the open-ended problem-solving skills Core Maths students need to develop, and to share these with departmental colleagues. Participant departments will support the role of Core Maths in promoting contextualised problem-solving and links to teaching in other subject areas.

The project involves a direct working partnership between the Maths Hubs Network and the Advanced Mathematics Support Programme (AMSP).

Details

What is involved?

Work Groups will be either online or a blended mix of face-to-face and online meetings with three days (or equivalent) of direct Work Group workshop time.

Work Groups will be designed to meet the specific needs of the lead participants.

Who can take part?

Lead participants in these Work Groups will be experienced and developing teachers of Core Maths. These may be teachers in post-16 settings whose main subject is maths or whose main subject is not maths. This Work Group is for schools and colleges in at least their second year of teaching Core Maths. Lead participants will be expected, where appropriate, to work with colleagues in their own department.

Dates:

18th Oct, face-to-face, (13:30-17:00)

23rd Nov, online, (16:00-17:30)

2nd Feb, online, (16:00-17:30)

9th Mar, face-to-face, (13:30-17:00)

14th Jun, online, (16:00-17:30)

Further details:

This project may be a blended approach (mixture of online and face-to-face) but venue will be:

Fox Primary School, Kensington Place,
London W8 7PP

Lunch will not be provided but you will have time to go to the local shops in Notting Hill or bring your own.

**The London Central and West Maths Hub reserves the right to charge a £75 fee for non-attendance to the sessions or for cancellations to any of the sessions with less than 1 weeks'

What are the benefits?

Participants and their departments will:

- ✓ disseminate information or lead professional development on Core Maths pedagogy with their departments
- ✓ support the role of Core Maths in promoting contextualised problem-solving within GCSE Maths
- ✓ share approaches to the planning and delivery of the Core Maths curriculum
- ✓ apply related pedagogical approaches in their Core Maths teaching to support Covid recovery
- ✓ understand the philosophy of Core Maths
- ✓ develop their understanding by exploring a range of common Core Maths approaches and topics (e.g. Fermi problems, critical analysis of numbers in the media) and their use of pre-release materials.

What is the cost?

The Developing Core Maths Pedagogy project is fully funded by the Maths Hubs Programme and the AMSP so is free to participating schools/colleges.

Covid-19 Recovery

Many positive lessons were learnt from online collaboration during Maths Hubs activity in 2020/21. These will be built upon in 2021/22.

As the impact of the pandemic hopefully recedes, the result for Maths Hubs work will be a blend of face-to-face activities and frequent online collaboration.



The wider context

These Work Groups uniquely offer lead participants the opportunity for sustained Core Maths professional development through collaboration over time. This project will contribute to the wider national effort to support teachers and leaders increase the growth in uptake and delivery of Core Maths in schools and colleges and to embed a culture of Core Maths within school and college maths departments with confidence.

Expectations of participants and their schools

Schools/colleges must be able to commit to the full academic year's programme. This involves a total of three days of face-to-face (or equivalent) support across the academic year, as well as classroom and school-based activity. Participants must also be supported by their school/college leadership to explore outcomes from the project with other colleagues in their department.

About the Hub

London Central and West works across 7 boroughs of London (Brent, Ealing, Harrow, Hammersmith and Fulham, Hounslow, Hillingdon and Kensington and Chelsea). It is one of 40 Maths Hubs in England, working together within the Maths Hub Programme, which began in 2014. To read more about the Maths Hub, please see [here](#).

A Work Group brings senior leaders and maths teachers together multiple times during the school year, rather than just being a one-off course. There is a common aim which is to research, develop, practise and recognise best practice. The emphasis is on collaborative, exploratory, evidence-based professional development.

If you are interested in this Work Group, please complete the following [Expression of Interest Form](#) and email it to admin@lcwmathshub.co.uk. We will then be able to send you the relevant dates and details of this Work Group for 2021-22.

