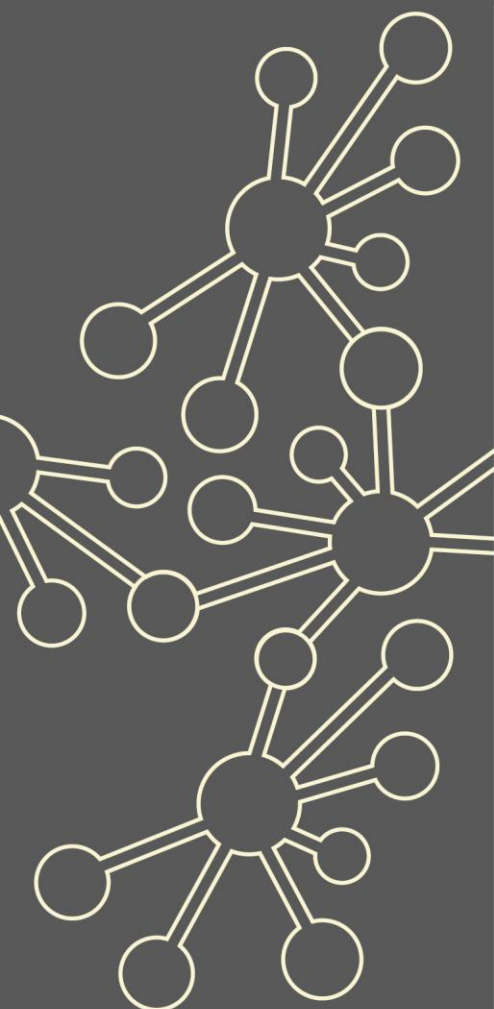


Developing A Level Pedagogy

Maths Hubs Network
Collaborative Projects
2021/22

NCP21-23



Outline

Primary focus for 2021/22: A level pedagogy to support Covid recovery

This project provides national support for the effective development of pedagogy in the teaching of A level Mathematics to support Covid recovery, to enhance the quality of teaching and the conceptual understanding of students, and the development of participants as leaders of A level teaching professional development in their own school or college. It aims to develop and sustain local communities of practice involving collaboration between teachers in developing pedagogy in their teaching of A level Maths.

The project involves a direct working partnership between the Maths Hubs Network and the Advanced Mathematics Support Programme (AMSP).

Details

What is involved?

Most Work Groups in the project will have three days (or equivalent) of direct meeting time. However, this may be adapted to suit the needs of the group, and could be three full day face-to-face sessions, six part-day/twilight sessions, or a blended mix of face-to-face and online meetings. Lead participants will be expected, where appropriate, to work with colleagues in their own department.

Work Groups will be designed to meet the specific needs of the range of experience of participants.

Who can take part?

The project is aimed at teachers in schools/colleges/departments that want to develop one or more aspects of their A level pedagogy to support Covid recovery. It would be suitable for existing leaders of A level teaching or experienced teachers of A level Maths who wish to lead the development of pedagogy in A level teaching with other colleagues in their own or other schools.

Teachers who will find this Work Group particularly useful include those who may have already completed other A level subject knowledge and pedagogy courses (such as Teaching A level Mathematics (TAM) or Preparing to Teach A level Mathematics), and who are able to work with other colleagues in their own or other schools.

Dates:

29th November 2021 (9:30-14:00)

7th March 2022 (9:30-14:00)

6th June 2022 (9:30-14:00)

Further details:

Venue: St. Dominic's Sixth Form College,
Mount Park Avenue, Harrow, HA1 3HX

Lunch will be provided

What are the benefits?

Participants and their departments will:

- ✓ be better able to prepare lessons that meet the requirements of the A level (including the overarching themes and the use of technology) and support Covid recovery
- ✓ support colleagues in their own school/college in embedding themes from the Work Group
- ✓ be confident to teach aspects of the content (particularly mechanics and statistics)
- ✓ understand related pedagogical approaches to support Covid recovery.

What is the cost?

The Developing A Level Pedagogy project is fully funded by the Maths Hubs Programme and the AMSP so is free to participating schools/colleges.

**The London Central and West Maths Hub reserves the right to charge a £75 fee for non-attendance to the sessions or for cancellations to any of the sessions with less than 1 weeks' notice. **

Covid-19 Recovery

Many positive lessons were learnt from online collaboration during Maths Hubs activity in 2020/21. These will be built upon in 2021/22.

As the impact of the pandemic hopefully recedes, the result for Maths Hubs work will be a blend of face-to-face activities and frequent online collaboration.



The wider context

There is a range of currently available maths teacher professional development around subject knowledge and pedagogy for new teachers of A level Maths via the AMSP, but no extended professional development for experienced teachers or leaders of A level Maths teaching around the overarching themes, technology or other aspects of pedagogy of the A level Maths specification. There is a strong focus on pedagogy through the overarching themes of the linear A level Maths specification, with changes to pedagogy in statistics teaching, assessment and expectations in the use of technology.

The impact of the pandemic from March 2020 to date in terms of school closures and variable access to remote teaching requires a strong focus on high quality teaching in the Covid recovery period.

Expectations of participants and their schools

Schools/colleges must be able to commit to the full academic year's programme. This involves a total of three days of face-to-face (or equivalent) support across the academic year, as well as classroom and school-based activity. Participants must also be supported by their school/college leadership to explore outcomes from the project with other colleagues in their department.

About the Hub

London Central and West works across 7 boroughs of London (Brent, Ealing, Harrow, Hammersmith and Fulham, Hounslow, Hillingdon and Kensington and Chelsea). It is one of 40 Maths Hubs in England, working together within the Maths Hub Programme, which began in 2014. To read more about the Maths Hub, please see [here](#).

A Work Group brings senior leaders and maths teachers together multiple times during the school year, rather than just being a one-off course. There is a common aim which is to research, develop, practise and recognise best practice. The emphasis is on collaborative, exploratory, evidence-based professional development.

If you are interested in this Work Group, please email John Petry jpetry@parliamenthill.camden.sch.uk or Max Burridge Max.Burridge@stdoms.ac.uk. We will then be able to send you the relevant dates and details of this Work Group for 2021-22. This Work Group will be run by St Dominic's Sixth Form college in Harrow.

